

LABURNUM

PRIMARY SCHOOL & NURSERY

CHALLENGE • ACHIEVE • RESPECT • EFFORT

NEWS

Thank You



After our last minute Need Project plea, we have had lots of extra tins, packets and jars donated – thank you. The food will be collected on Tuesday, so any last minute donations can come into school on Monday. Thank you once again.

Book Fair

From the 13th to the 20th March, after school in the dining room, we will be holding a book fair in school. This time we are trying a 'book people' book fair, so the selection of books will be different. We look forward to seeing you there.

Parent/Teacher Meetings

It is always a pleasure for us to share the progress of your children with you and we really do appreciate the support you give us and your children to support their learning. Parent/Teacher Meetings were once again very successful and it was great to hear lots of positive feedback from parents before and after their appointments. If you did not manage to book an appointment or cancelled at the last minute, please contact the school office to arrange an alternative time to meet with your child's class teacher.

World Book Day

You will be aware that the children have come home with a World Book Day voucher. Please do take your child to a shop to use the voucher. Tesco in Sandy have the World Book Day books in stock and each voucher can be exchanged for a book.



Wear it WACKY for Red Nose Day!



Red Nose Day is Friday 15th March. On this day, for a donation (suggested £1), children can come to school dressed in a wacky way – it could be as simple as odd socks, or you could go crazy with clashing colours and giant bows! Children can of course wear official Red Nose Day merchandise on that day too. From Monday 4th March, the school office will have red noses for sale at £1.25 each. Please bring/send in the exact amount as the school office are unlikely to be able to provide change.

Values Education

Our value for February is:

Tolerance

Spring 2019:

- Jan: Appreciation
- Feb: Tolerance
- Mar: Responsibility
- Apr: Collaboration & Co-operation



This Week's Attendance

| | | |
|----------|-------|--------------|
| Apple | 86.0% | - |
| Beech | 99.3% | 0 late marks |
| Elm | 95.3% | 1 late mark |
| Cedar | 97.9% | 2 late marks |
| Chestnut | 96.0% | 3 late marks |
| Willow | 97.4% | 2 late marks |
| Sycamore | 96.4% | 0 late marks |

Attendance Target: 97%

Co-op Fundraising Update

Keep reminding your friends and family to sign up and support us too!



£583.54
raised so far!

Friends of Laburnum School
Education & Skills

**SUPPORT OUR
SCHOOL LIBRARY**

LABURNUM PRIMARY SCHOOL

Laburnum Road, Sandy, SG19 1HQ

T: 01767 680691/07948 026230 E: office@laburnumprimary.co.uk W: www.laburnumprimary.co.uk Page 1 | 20



Upcoming Dates:

March:

| | |
|---|------------------------------------|
| Tues 5 th 9am | Sycamore Class Assembly |
| Weds 6 th | Year 4/5 Cross Country Competition |
| Thurs 7 th | Word Book Day – Character Dress Up |
| Fri 15 th | Red Nose Day |
| Fri 22 nd | KS2 Tag Rugby Tournament |
| Tues 26 th 9am | Chestnut Class Assembly |
| Mon 25 th – Fri 29 th | FLS Mother's Day Present Room |
| Thurs 28 th | Y5 Sandy Cluster Hockey Tournament |
| Fri 29 th 2-3:30pm | FLS Mother's Day Afternoon Tea |

April:

| | |
|-----------------------|--|
| Thurs 4 th | Parent Partnership SEND Drop-In in Dining Hall |
| Fri 5 th | School Closes for Easter Break |
| Tues 23 rd | School closed – Training Day |
| Weds 24 th | School opens for Summer Term |

Achievements this week:

Apple Class

Kindness: Cody
Patience: Leila-May, Becky
Respect: Meredith, Levi
Responsibility: Brooke, Millie W

Beech Class

Effort: Noah, Frankwilliam
Excellence: Mollie, Rhys
Helpfulness: Henry, Tex
Perseverance: Ruby, Rory
Respect: Sofia
Sharing: Milo
Bronze Award: Jack Newland
Golden Ticket: Olivia

Lunchtime Cup



The Lunchtime cup was presented to Willow Class

Elm Class

Collaboration & Co-operation: Ruby, Ethan, Jayden, Jake, Regina, Zachary, Anna-Rose, Jack, Olympia, Imogen
Effort: Ethan
Helpfulness: Regina
Perseverance: Colby
Tolerance: Kasey

Cedar Class

Appreciation: Howard James
Excellence: Max, Dominic, Emily
Helpfulness: Hannah
Kindness: Kacie
Patience: Lily
Perseverance: Aleeya
Respect: Alex
Tolerance: Dylan **Silver Award:** Noah

Superstar

The Superstar Award was presented to George B in Sycamore Class



Chestnut Class

Collaboration & Co-operation: Scarlett, Ethan, Alexis, Derick, Joan, Jacob, Millie, Isla, Jasper, Hannah, Olivia, Sapphire, Mansury, Indiana, Tobias
Excellence: Ryan, Ciara, Sapphire
Helpfulness: Alexis, Ryan, Isla, Ellena, Joan, Jacob, Millie, Olivia, Hannah, Ciara, Tobias, Oliver
Kindness: Scarlett
Responsibility: Derick, Scarlett, Ethan, Alexis, Joan, Freya, Millie, Hannah, Taylor, Olivia, Sasha, Sapphire, Indiana
Tolerance: Millie **Bronze Award:** Ellena

Willow Class

Challenge: Jacob, Reece, Jimmy, Amelia
Consideration: Jacob
Effort: Lola, Evie, Amelia
Excellence: Lola
Helpfulness: Taylor, Eloise, Kayla, Oliver E
Kindness: Macey
Patience: Freddie
Perseverance: Taylor
Bronze Award: Olivia
Silver Award: Eloise

Sycamore Class

Effort: Emily, Zack, Imogen, Tyler, Rosie, George B, Rhys, Olivia, Lily, Harry R, Harry W
Bronze Award: Imogen, Ava, Ellie, Sky

House Points

Pankhurst



140

Seacole



154

Gandhi



130

Churchill



163

LABURNUM PRIMARY SCHOOL

Laburnum Road, Sandy, SG19 1HQ

T: 01767 680691/07948 026230

E: office@laburnumlower.co.uk

W: www.laburnumlower.co.uk

Page 2 | 20



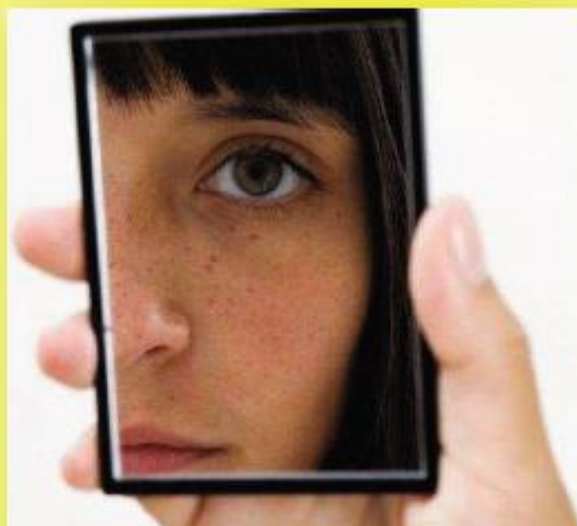
The Forum

Busy Getting Stronger

Raising awareness of young people's mental health and wellbeing

SELF-ESTEEM

for young people and families



Monday April 1st 2019, 7:00 - 9:00 pm
Redborne Upper School (North Hall),
Flitwick Road, Ampthill, MK45 2NU

Admission is free, but please book your place.
Contact Richard Luscombe: 01525 714046
or e-Mail theforumbgs@yahoo.co.uk

 www.facebook.com/TheForumBGS  [@TheForumBGS](https://twitter.com/TheForumBGS)

LABURNUM PRIMARY SCHOOL

Laburnum Road, Sandy, SG19 1HQ

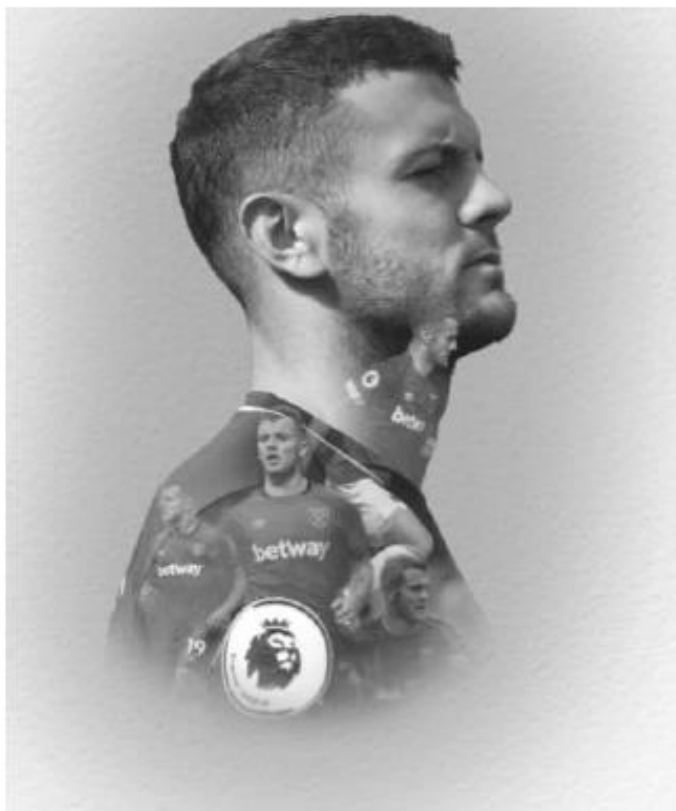
T: 01767 680691/07948 026230 E: office@laburnumlower.co.uk W: www.laburnumlower.co.uk



JW19 and Grassroots Soccer School

at St Christopher

**Tuesday 16th, Wednesday 17th and Thursday 18th April
2019 (Easter holidays)**



Time 10.00 – 4.00

**Signed Jack Wilshere Shirt for every coaches'
challenge winner**

**Every Child will receive a trophy and a signed Jack
Wiltshire photo.**

Book through eventbrite

<https://www.eventbrite.com/e/jack-wilshere-and-grassroots-soccer-school-tickets-56365782573>



LABURNUM PRIMARY SCHOOL

Laburnum Road, Sandy, SG19 1HQ

T: 01767 680691/07948 026230 E: office@laburnumlower.co.uk W: www.laburnumlower.co.uk



Kid's Club Deputy Leader

Start date – 1st April 2019

Salary Range – Level 3 Point 15 - 18

Maple Tree Kid's Club offers a wide range of indoor and outdoor activities to children between the ages of 3 and 11.

We are looking for a hardworking, enthusiastic and experienced individual with a passion for working with children to join the team as Deputy Play Leader from 1st April 2019.

This role offers a great deal of variety. The successful candidate will lead and contribute to lots of different activities, with no two days alike. The postholder will work alongside the team to create a fantastic atmosphere that helps make the after school time or Holiday club relaxing and enjoyable for all the children involved.

The Deputy Kid's Club Leader is responsible for supervising the children, ensuring their safety at all times, engaging with them in aspects of play and conversation, setting up activities for children to optionally take part in, meeting and greeting parents and providing them with feedback on their child's time at the club. The postholder will ensure that they strictly adhere to the safeguarding requirements of the School.

The post is for a total of 15 hours per week (50 weeks per year) and are 3.00 pm-6.00 pm Monday to Friday, term time only. Contracted hours will be worked during holiday in agreement with the Kid's Club Leader. There may be an opportunity for overtime during the school holidays.

The successful candidate must possess the following skills and attributes:

- NVQ level 3 childcare qualification;
- paediatric First Aid qualification;
- previous experience working with children;
- enthusiastic and organised with excellent communication skills and good sense of initiative;
- fun loving, caring, responsible, compassionate, committed, creative, responsible;
- flexible team player willing to take on various tasks as required.

Further information, an application form and job description can be found on our website www.mapletreepriamaryschool.com or from the school office – 01767 699806 or mapletree@cbc.beds.sch.uk
Visits are warmly welcomed. Please ring the school office to make an appointment.

Closing date for applications: Friday 15th March 2019

Interviews will be held: Monday 25th March 2019

Maple Tree Primary School is committed to safeguarding and promoting the welfare of children. Applicants must be willing to undergo child protection screening appropriate to the post, including checks with past employers and the Disclosure and Barring Service.

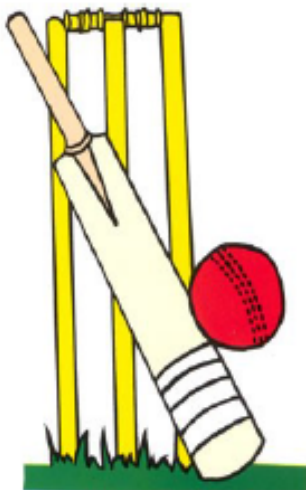


Sandy Cricket Club Colts

We are a fun, safe and child-friendly cricket club, looking to attract young players of all abilities from school year 3 and up, to join our youth cricket programme.



- We offer structured cricket coaching with the emphasis on learning through enjoyment.
- Each session, which is run by ECB qualified and fully insured coaches, will focus on the key skills of cricket including batting, bowling and fielding, followed by a fun game.
- No experience needed and all equipment is provided.
- Coaching is Saturday 9-10am all year round. April to August at the Sunderland Rd Recreation Ground and September to March at Sandy Secondary School.



COME DOWN AND JOIN IN

For more information contact:

Lee Eplett on 07870 428783

cricketclubsandy@gmail.com

www.sandycricketclub.co.uk



LABURNUM PRIMARY SCHOOL

Laburnum Road, Sandy, SG19 1HQ

T: 01767 680691/07948 026230

E: office@laburnumlower.co.uk

W: www.laburnumlower.co.uk



Child & Adolescent Emotional Wellbeing

Programme



East London
NHS Foundation Trust

A rolling parent & carer information & training programme run by
Bedfordshire CAMHS

Following on from the success of the Bedfordshire CAMHS Parent Information and Training Pilot Session we ran in December 2018, we are now rolling out a monthly programme covering a wide range of topics.

Each month we will cover a different topic and they will take place at The Rufus Centre and a Bedford venue (which will be confirmed) so it is available in both areas

Who can attend?

Any parent or carer who has a child registered at a Bedfordshire GP, you do **not** need to be open to CAMHS

Tuesday 26th March 2019

Anxiety and Panic

Tuesday 16th April 2019

Managing Emotions, resilience and self-esteem

How do I book a ticket?

Tickets will be available on the web from Eventbrite and they will be free

Thursday 23rd May 2019

Exam and school pressure

What are the timings of the sessions?

The sessions will take place between 6-8pm

Tuesday 25th June 2019

Self-harm, suicide, risk taking behaviours and self-medicating

Can young people attend?

These sessions are for parents and carers only

Tuesday 16th July 2019

Low mood

Where can I find more information?

Information for each session will be released closer to the time. These will be advertised on the CAMHS website, at local schools and GP services, as well as at agencies such as the council so please keep an eye out for them!

Tuesday 20th August 2019

Teenage Mental Health

Anxiety & Panic

Tuesday 26th March 2019



We are pleased to announce the first session as part of the Child & Adolescent Emotional Wellbeing Programme which is being run by Bedfordshire CAMHS

When: Tuesday 26th March 2019

Time: 6—8pm (arrival from 5.45pm)

Where: The Rufus Centre, Steppingley Road, Flitwick, Bedford MK45 1TH

In this session we will focus on anxiety and panic, including causes, symptoms and strategies which will enable you to support the children and young people in your life

The young people DO NOT need to be open to CAMHS, however they must be registered at a Bedfordshire GP

How can I book tickets?

Tickets are free and are available online from www.eventbrite.co.uk by searching for 'child and adolescent wellbeing'

You can also scan the QR code on your smartphone for access to the website



Information for Professionals

We have some availability for a limited number of professionals to also attend this session, if you are interested then please contact the office on 01234 310800/01234 893301 and ask for Kirsty Sharp or Sue Hollingsworth to book them directly.

Please let the receptionist know that you are calling regarding tickets for the event, this is to ensure you are passed to the right person!

LEARN ENGLISH OR MATHS

FOR EVERYDAY LIFE, WORK AND FURTHER STUDY

JOIN OUR JULY SUMMER SCHOOL

Intensive two-week English
and Maths classes for adult
learners assessed as Level 1
and Level 2.

www.bedford.ac.uk/summerschool
Email: enquiries@bedford.ac.uk
Tel: 01234 291000

 **BEDFORD
COLLEGE**
Part of The Bedford College Group



LABURNUM PRIMARY SCHOOL

Laburnum Road, Sandy, SG19 1HQ

T: 01767 680691/07948 026230

E: office@laburnumlower.co.uk

W: www.laburnumlower.co.uk



JOIN OUR SUMMER SCHOOL CLASSES



ENGLISH SUMMER SCHOOL

Monday 8 July - Friday 19 July 2019
10.00am-1.00pm (every day)

MATHS SUMMER SCHOOL

Monday 8 July - Friday 19 July 2019
10.00am-1.00pm (every day)

Students need to be able to commit to attending every day of the two-week course.

You do not need any qualifications to start this course, however you must be 19 or over, a UK/EEA citizen and have a minimum Level 1 ability in spoken English. You will be asked to undertake a free assessment before your course starts to help determine your existing skill level. Your existing skill level will need to be assessed as working toward Level 1 or Level 2 to do this course.

Please note that the focus of the English course is to develop the language skills of people who speak English as their first/home language or have achieved ESOL Level 1 or above. If you are not a fluent English speaker, please refer to our ESOL courses.

The courses are free to UK and EU residents. You will only have to pay a £20 resource fee.

TO BOOK AN ASSESSMENT AND FIND OUT MORE

Visit: www.bcdford.ac.uk/summerschool

Email: enquiries@bedford.ac.uk

Tel: 01234 291000



BedfordCollege



@BedfordCollege



@BedfordCollege



THE
BEDFORD
COLLEGE
GROUP



QAA
UK Quality Assured



LABURNUM PRIMARY SCHOOL

Laburnum Road, Sandy, SG19 1HQ

T: 01767 680691/07948 026230

E: office@laburnumlower.co.uk

W: www.laburnumlower.co.uk





Dear Parents,

re: Minecraft After School Club at Laburnum Primary School

We are pleased to be able to offer a new and very exciting **Minecraft** after school club running from **15:30 – 16:30** every **Wednesday** from **20th February** for **7** weeks. The club is organised, administered and supported by Mi Little Pad Ltd, an external ICT provider who deliver Minecraft clubs across the whole of England and Wales.

As well as completing a range of exciting educational challenges, students will have the chance to work both individually and 'join the same world' to work in teams.

As an added bit of fun, students from the club will also take part in a weekly Minecraft competition where parents can vote for their favourites and points are won for the national leaderboard.

15 Devices with Minecraft on will be available for the children to use as well as a wifi router to facilitate team activities.

BOOK ONLINE

The club costs £3.99 per child per session and is paid for half termly in advance, All club places are reserved and paid for online. Just go to website www.milittlepad.com to book you child's place. Note... **Online sales close the day of the first session, places are limited and late payments may be more expensive.**

Any problems please contact us on [07739 640551](tel:07739640551) or admin@milittlepad.com



Dear Parents,

Lego After School Club at Laburnum Primary School

We are pleased to be able to offer **Lego** after school club running from **3.30pm – 4.30pm** every **Monday** from **18th February** for **7** weeks. There is a maximum of **15** places available. The club is organised, administered and supported by Kids With Bricks Ltd, an external provider who deliver after school clubs across the whole of the UK.

As well as completing a range of exciting educational challenges, students will have the chance to work both individually and to work in teams.

As an added bit of fun, students from the club will also take part in a weekly inter-school LEGO competition where parents can vote for their favourites and points are won for the national leader board.

BOOK ONLINE

The club costs £3.99 per child per session and is paid for half termly in advance. All club places are reserved and paid for online. Just go to website www.kidswithbricks.com to book you child's place. Note... **Online sales close the day of the first session, places are limited.**

Any problems please contact us on 01633 383211 or bookings@kidswithbricks.com

Kind regards,

John Gallacher

**FRIENDS OF SANDY
SECONDARY SCHOOL
INVITE YOU TO OUR**



**FRIDAY
8TH MARCH 2019**

@

**SANDY SECONDARY
SCHOOL**

7PM FOR 7:30PM

**£6 PER HEAD
MAX TEAMS OF EIGHT**



**L
I
C
E
N
S
E
D

B
A
R**

INCLUDES A PLOUGHMANS SUPPER

BOOK YOUR TEAM AT: -

www.jumblebee.co.uk/fosssquiznight-mar2019

For more information about Friends of Sandy Secondary School
Facebook <https://www.facebook.com/friendsofsandysecondaryschool/>
Email friendsofsandysecondaryschool@hotmail.com



LABURNUM PRIMARY SCHOOL

Laburnum Road, Sandy, SG19 1HQ

T: 01767 680691/07948 026230 E: office@laburnumlower.co.uk W: www.laburnumlower.co.uk



Page 13 | 20



*Calling all active & energetic
boys and girls!*

NON CONTACT RUGBY FOR 1½-7 YR OLDS

WOULD YOU LIKE YOUR CHILD TO RUN OFF SOME
ENERGY AND MAKE NEW FRIENDS? PLAY AS A TEAM AND
LEARN SOME AMAZING SPORTS SKILLS?

Little Scrumpers Rugby non-contact rugby classes are not only fun,
exciting and professional; they also help to improve your child's gross
motor skills, sporting ability and confidence. Classes have a positive effect
on communication, behavioural, and social skills by encouraging team
work and sharing. Come along and have a try!



OUR CLASSES ARE
AT A VENUE NEAR YOU

0330 088 1172

WWW.LITTLESKRUMMERS.COM
MAIL@LITTLESKRUMMERS.COM

TURN OVER TO
FIND OUT MORE! 

LABURNUM PRIMARY SCHOOL

Laburnum Road, Sandy, SG19 1HQ

T: 01767 680691/07948 026230

E: office@laburnumlower.co.uk

W: www.laburnumlower.co.uk





Free Drop In Information sessions

For parents/carers, children and young people regarding Special Educational Needs & Disability in educational settings.

We are a free, confidential and impartial support service for parents/carers, children and young people aged 0 – 25 years.

Get advice about:

- Finding a school
- Classroom Support
- SEND Support Plans
- Behaviour issues
- Education Health & Care Plans
- Annual Reviews
- Exclusions

How we help:

- Telephone helpline
- Leaflets and information
- Website and downloadable resources
- Help with forms, letters, EHCP
- Information on local support groups
- Home visits and support at school meetings

Spring Term Dates 2019

Dunstable South Children's Centre (Wednesdays 10-11.30am)

9th January, 13th March

Leighton Buzzard Children's Centre (Fridays 10-11.30am)

4th January, 1st February, 1st March

Shefford District Children's Centre (Wednesdays 9.30-11am)

23rd January, 27th February, 27th March

Sandy Children's Centre (Thursdays 9.30-11am)

10th January, 7th February, 7th March

No appointment necessary. If you cannot get to a session and need to talk to us, please contact us:



0300 300 8088



cbcsendpypps@centralbedfordshire.gov.uk



www.centralbedfordshire.gov.uk/parentpartnership



CBCSENDPYPPS



@SENDPartnership

LABURNUM PRIMARY SCHOOL

Laburnum Road, Sandy, SG19 1HQ

T: 01767 680691/07948 026230

E: office@laburnumlower.co.uk

W: www.laburnumlower.co.uk





Central Bedfordshire Council SEND Parent & Young Person Partnership Service



Who we are:

We are a statutory service that provides FREE confidential, impartial information, advice and support for parents, carers, children and young people (0 to 25 years) in relation to Special Educational Needs and Disability (SEND) in an educational setting. This is available for all residents of Central Bedfordshire.

We are a small team with 2 Partnership Officers & an Administrator in addition to experienced volunteers that also can provide support.

What we do:

We can support in a number of ways including giving advice over the telephone, attending school meetings with you, talking to you at a drop in session* that we run monthly, helping you to understand paperwork, offer a range of information leaflets, completing paperwork with you, supporting you if your child or young person is going through the Statutory Assessment process and signposting to relevant organisations that also may be able to provide you with support.

We may be contacted by phone, email, text, Facebook, Twitter and through an on-line self-referral form on the Central Bedfordshire website.

Contact us: (Monday-Friday 07.30-4pm):

Tel: 0300 300 8088 (message service available)

Email: cbcsendpypps@centralbedfordshire.gov.uk

Online referral: https://www.centralbedfordshire.gov.uk/officeforms/Parent_Self_Referral.ofml

Facebook: <https://www.facebook.com/CBCSENDPYPPS>

Twitter: @SENDPartnership <https://twitter.com/sendpartnership>

Link to Local Offer & our service:

<http://www.centralbedfordshire.gov.uk/children/sen-disability/send-partnership/overview.aspx>

Drop Ins:*

<http://www.centralbedfordshire.gov.uk/children/sen-disability/send-partnership/events.aspx>

Information leaflets:

<http://www.centralbedfordshire.gov.uk/children/sen-disability/send-partnership/newsletters.aspx>

LABURNUM PRIMARY SCHOOL

Laburnum Road, Sandy, SG19 1HQ

T: 01767 680691/07948 026230 E: office@laburnumlower.co.uk W: www.laburnumlower.co.uk



Kidslingo Spanish at Laburnum School



¡Hola! Did you know that Kidslingo has a Thursday after-school Spanish club at Laburnum School, with our new tutor Alejandro (Alex)?

Learning a language at a young age helps children to grow in self-confidence and boosts their natural creativity. There is a fantastic window of opportunity during early years' development where children can absorb a language without even realising it!



At Kidslingo, we are dedicated to teaching Spanish to children through fun. We use stories, games, songs and drama to bring the language to life and inspire our learners.

- 60 minute classes on Thursdays – 3:30-4:30pm
- Next block starting on Thursday 28th February 2019 and runs for 6 lessons, with a maximum of 10 children
- £5.00 per class and half termly commitment
- We will issue vocabulary, provide reward certificates and worksheets

To register your child, please go to the following link

<http://bit.ly/2sUqVSS>

Please book early to avoid disappointment as places are limited!

If you have any problems with registering or have any questions, please email me at nishav@kidslingo.co.uk or contact 07787542346.



www.kidslingo.co.uk

Nisha

07787 542346

Facebook (@KidslingoSpanishCentralBedfordshire)

Nisha & Alex are fully trained, insured and hold an enhanced DBS certificate.

A Kidslingo Franchise owned and operated under licence by Nisha

LABURNUM PRIMARY SCHOOL

Laburnum Road, Sandy, SG19 1HQ

T: 01767 680691/07948 026230

E: office@laburnumlower.co.uk

W: www.laburnumlower.co.uk



Concerned about your child's speech and language development? Pop in to Come and Play to see Lisa Mitchell, Speech and Language Therapist on:

Tuesday 22nd January 10.00am - 11.30am

Tuesday 19th February 10.00am - 11.30am

Tuesday 19th March 10.00am - 11.30am

Save a Baby's Life

First Aid courses for parents/grandparents/carers

Saturday 16th February 2019 10-12 Noon

Saturday 18th May 2019 10 – 12 Noon

Saturday 27th July 2019 10-12 Noon

Spaces are limited so please ring to book your place.

A charge of £3.50 per person is payable on the day. All money is given to the Save a Baby's life charity. You are welcome to bring very young babies but there is limited space for play.

Health Visitor Pop Ins

Sandy Children's Centre

3rd Tuesday of month 2.00pm-3.15pm

Biggleswade and District Children's Centre

2nd and 4th Thursday of each month 1.30pm-2.45pm

Shefford Children's Centre

3rd Wednesday of each month 1.00pm – 3.00pm

Please note: Babies only need to be weighed monthly up to 6 months unless you have a concern about their weight.

We are looking forward to seeing you all at the Children's Centre.

Please note, there is no parking on the road outside the Children's Centre, however parking is available on Robert Hunt Gardens and the public part of Laburnum Road. As we are promoting healthy lifestyles initiatives, we see the lack of parking as positive. We hope that you will too!

Enjoy the walk!

Central
Bedfordshire



Sandy Community Children's Centre

Managed by Laburnum Primary School Governors
Laburnum Road, Sandy SG19 1HQ



Timetable

2nd January 2019 – 5th April 2019

For further information and to book on to any of our courses/activities

Call the Centre on 01767 699019

See our Facebook page
Sandy Community Children's Centre

Visit our website
www.sandychildrenscentre.co.uk



email: sandychildrenscentre@laburnumprimary.co.uk

Support & Advice

The Centre staff can also offer support and advice on **breast feeding**, **parenting**, **choosing childcare**, **FREE 2 year funded pre-school places**, **weaning**, **toilet training**, **stop smoking**, oral health, **training/education**, **budgeting/finance** and lots more. Please ask a member of the team or contact us by phone or email.

Central
Bedfordshire



Sandy Children's Centre Timetable 2nd January 2019 – 5th April 2019

| | | | | | | |
|----------|---|-------------------|---|--|---|--------------------|
| MONDAY | Potty Training Talk | 9.15am – 10.15am | Sandy Children's Centre | 21 st Jan, 18 th March | Advice on Potty Training your child with 0-19 Team Nursery Nurse | Booking |
| | Baby Sign with Lizzie | 10.00am – 11.00am | Sandy Children's Centre | 28 th Jan, 4 th and 11 th Feb | A three week course designed to introduce you and your baby to signing. Suitable for families with babies aged 0-1. | Booking |
| | Starting Solids Talk | 10.30am - 11.30am | Sandy Children's Centre | 21 st Jan, 18 th Feb, 18 th March, 15 th April | Advice and support around starting solids from 0 – 19 Team Nursery Nurse | Booking |
| | Starting Solids Picnic | 11.30 am-12.15 pm | Sandy Children's Centre | 18 th Feb, 15 th April | Picnic for babies over 6 months starting solid food. Babies under 6 months welcome to observe. Food provided by Children's Centre | Booking |
| | Baby Brasserie | 1.00pm - 2.00pm | Sandy Children's Centre | Weekly | Café style group for Breastfeeding mums and mums to be | Drop-in |
| | Bumps to Babes | 2.00pm - 3.15pm | Sandy Children's Centre | Weekly | Come along for a chat and a cuppa and meet other parents/carers. For Babies who are not yet walking up to 12 months | Drop-in |
| TUESDAY | Job Centre Plus | 9.00am - 11.30am | Sandy Children's Centre | Weekly | Employment and benefit advice for single parents/carers. Call 01767 275734 to book. | Booking Drop-in |
| | Come and Play | 10:00am - 11:30am | Sandy Children's Centre | Weekly (Term Time only) 8 th Jan – 5 th Feb 19 th Feb – 2 nd April | Weekly Stay and play group 0 – 5 years | Drop-in |
| | Health Visitor Pop In | 2.00pm -3.15pm | Sandy Children's Centre | 3 rd Tuesday in each month | Monthly Pop In for children 0 – 5 and parents. Health Team available for advice and support with Child Health issues. | Drop In |
| WEDS | Midwife Clinic | 9.30am -11.30am | Sandy Children's Centre | Weekly | Post Natal Clinic from birth to 28 days, for post-natal checks, weight and breastfeeding advice. To book appointment call 01767 224173 | Booking |
| | Baby Days | 1.00pm – 3.00pm | Sandy Children's Centre | 9 th Jan – 13 th Feb 27 st Feb – 3 rd April | A 6 session course for new parents and babies 0 – 3 months covering sleep, feeding, baby brain development and childhood illnesses. | Booking |
| THURSDAY | CBC SEND Partnership | 9:30am - 11.00am | Sandy Children's Centre Laburnum Dining Room | 1 st Thursday of Month (Term Time Only) | Advice and support for parents/carers of children with Special Educational Needs. | Drop-in |
| | Bumps, Birth and Baby Stuff One day course | 9.00am – 5.00pm | Sandy Children's Centre | 3 rd Thursday of each month 17 th Jan, 21 st Feb, 21 st March, 18 th April | Prepare for your new arrival. Come and find out more about birth, feeding and caring for you and your baby. Ideally, expectant mums should be at least 30 weeks gestation or more to attend this session and they MUST be a resident of Central Bedfordshire Council. Partners are encouraged to attend too. To book, visit www.bumpbirthandbaby-cbc.eventbrite.com | Online Booking |
| | Baby Massage with Lizzie | 12.30pm-1.30pm | Sandy Children's Centre | 24 th 31 st Jan 7 th and 14 th Feb | A 4 week course for babies 4 weeks to pre-mobile to support bonding, attachment and promote sleep. Also supports babies with colic. £5 charge | Booking |
| | Baby Yoga with Lizzie | 2.15pm – 3.15pm | Sandy Children's Centre | 24 th , 31 st Jan, 7 th Feb | A 3 week course for pre-crawling babies 20 weeks + to support physical development of core strength, sitting, crawling and standing. £5 charge | Booking |
| | Parent Puzzle Parenting Workshops | 9.30am – 11.30am | Sandy Children's Centre | 24 th , 31 st Jan, 7 th , 14 th Feb | 4 Workshops including: Understanding children's behaviour, Praise & encouragement, Boundaries, Time out, Dealing with stress and Conflict. | Booking |
| FRI | Adult Education ESOL classes | 9.30am -11.30am | Sandy Children's Centre | Term Time Only Ends May 2019 | English classes for speakers of other languages. | Booking |
| SAT | Dad's Club | 10.00am -11.30am | Sandy Children's Centre | 5 th Jan, 2 nd Feb, 2nd March | Stay and play session for Dads and male Carers and their children 0-5 years (older siblings up to 8 years welcome). | Drop-in |

DINNER TIMES

PIZZA & PASTA

AROUND THE WORLD

WEDNESDAY ROAST

SCHOOL FAVOURITES

FISHY FRIDAYS

V = Vegetarian
GF = Gluten Free

Week 1

Weeks starting:
31st Dec | 21st Jan | 11th Feb | 4th Mar | 25th Mar

Week 2

Weeks starting:
7th Jan | 28th Jan | 18th Feb | 11th Mar | 1st Apr

Week 3

Weeks starting:
14th Jan | 4th Feb | 25th Feb | 18th Mar | 8th Apr

BREAD AND SALAD
BAR AVAILABLE
DAILY

Pizza Margherita (v)
Spaghetti Bolognaise
Sweet Chilli Chicken Baguette
Jacket Potato (Choice of Fillings) (gf)
Garden Peas, Sweetcorn, Salad Bar
Ice Cream (gf)
Yoghurt (gf)
Fresh Fruit Salad (gf)

Pizza Margherita (v)
Quorn Chilli (v)
Tuna Mayo & Cucumber Baguette
Jacket Potato (Choice of Fillings) (gf)
Rice, Garden Peas, Sweetcorn, Salad Bar
Arctic Roll
Yoghurt (gf)
Fresh Fruit Salad (gf)

Pizza Margherita (v)
Cheesy Lentil Pasta (v)
Chicken Mayo Baguette
Jacket Potato (Choice of Fillings) (gf)
Garden Peas, Sweetcorn, Salad Bar
Strawberry Delight (gf)
Yoghurt (gf)
Fresh Fruit Salad (gf)

Chicken Korma (gf)
Vegetable Korma (v) (gf)
Quorn Cottage Pie (v)
Jacket Potato (Choice of Fillings) (gf)
Rice, Carrots, Cauliflower, Salad Bar
Apple & Sultana Crumble with Custard
Yoghurt (gf)
Fresh Fruit Salad (gf)

Beefburger in a Bun
Vegetable Burger in a Bun (v)
Salmon & Garden Pea Penne
Jacket Potato (Choice of Fillings) (gf)
Potato Wedges, Seasonal Roast Vegetables, Tomato Ketchup, Salad Bar
Spiced Apple Crumble & Custard
Yoghurt (gf)
Fresh Fruit Salad (gf)

Authentic Chicken Curry (gf)
Vegetable Tikka Masala (v) (gf)
Country Beef Casserole (gf)
Jacket Potato (Choice of Fillings) (gf)
Rice, Cabbage, Carrots, Salad Bar
Peach Crumble & Custard
Yoghurt (gf)
Fresh Fruit Salad (gf)

Roast Chicken Breast (gf)
Cauliflower Cheese (v)
Egg Mayo Baguette (v)
Jacket Potato (Choice of Fillings) (gf)
Roast Potatoes, Swede, Cabbage, Gravy, Salad Bar
Iced Lemon Sponge
Yoghurt (gf)
Fresh Fruit Salad (gf)

Roast Chicken Breast (gf)
Quorn Fillet (v)
Italian Tomato Penne (v)
Jacket Potato (Choice of Fillings) (gf)
Roast Potatoes, Cabbage, Carrots, Gravy, Salad Bar
Oat Cookies
Yoghurt (gf)
Fresh Fruit Salad (gf)

Roast Chicken Breast (gf)
Quorn Sausages (v)
Macaroni Cheese (v)
Jacket Potato (Choice of Fillings) (gf)
Roast Potatoes, Cauliflower, Carrots, Gravy, Salad Bar
Pear & Chocolate Sponge
Yoghurt (gf)
Fresh Fruit Salad (gf)

Baked Chicken Sausages
Quorn Sausages (v)
Vegetable and Bean Casserole (v) (gf)
Jacket Potato (Choice of Fillings) (gf)
Mashed Potato, Broccoli, Carrots, Gravy, Salad Bar
Lancashire Cookie
Yoghurt (gf)
Fresh Fruit Salad (gf)

Mexican Chicken
Mexican Bean Bake (v)
Omelette (v) (gf)
Jacket Potato (Choice of Fillings) (gf)
Vegetable Rice, Carrots, Garden Peas, Salad Bar
Banana Bread
Yoghurt (gf)
Fresh Fruit Salad (gf)

Turkey Meatballs & Tomato Sauce
BBQ Beef Chilli
Creamy Mushroom Pasta (v)
Jacket Potato (Choice of Fillings) (gf)
Sauté Potatoes, Swede, Cabbage, Salad Bar
Oat & Sultana Cookies
Yoghurt (gf)
Fresh Fruit Salad (gf)

Fish Fingers
Breaded Fish Fillet
Quorn Nuggets (v)
Chicken, Mayo & Sweetcorn Baguette
Potato Wedges, Baked Beans, Sweetcorn, Tomato Ketchup, Salad Bar
Apple & Syrup Sponge with Custard
Yoghurt (gf)
Fresh Fruit Salad (gf)

Fish Fingers
Fish Cakes
Vegetable Nuggets (v)
Cheese Salad Baguette (v)
Potato Wedges, Spaghetti Hoops, Sweetcorn, Tomato Ketchup, Salad Bar
Chocolate Sponge
Yoghurt (gf)
Fresh Fruit Salad (gf)

Fish Fingers
Breaded Fish Fillet
Pasta Margherita (v)
Egg & Cress Baguette (v)
Potato Wedges, Baked Beans, Garden Peas, Tomato Ketchup, Salad Bar
Cherry Shortbread
Yoghurt (gf)
Fresh Fruit Salad (gf)